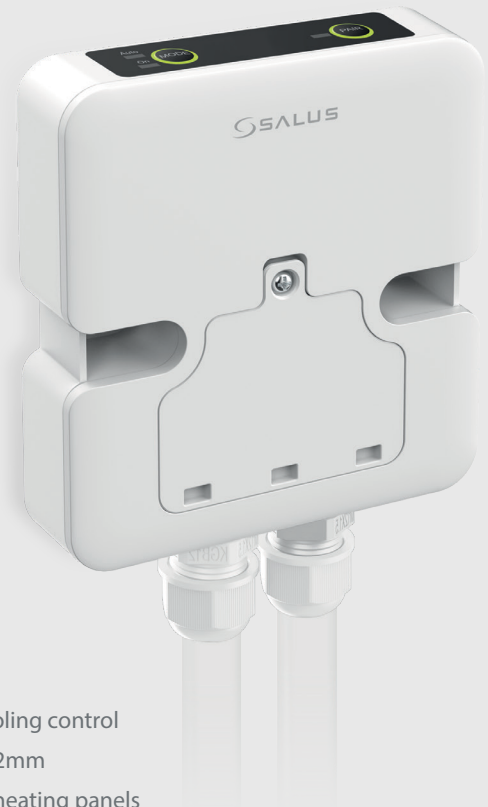


# SSR868

RF Receiver (868 MHz)

## About this product...

The SALUS SSR868 RF Receiver, when paired with a compatible SALUS thermostat, provides an efficient and reliable solution for managing your home's heating or cooling system. Utilizing the 868MHz protocol, this receiver enables seamless integration with additional receivers, allowing you to create a unified, synchronized network for controlling multiple heating or cooling zones. This flexibility ensures effortless and precise management of your entire HVAC system, offering enhanced comfort and energy efficiency throughout your home.



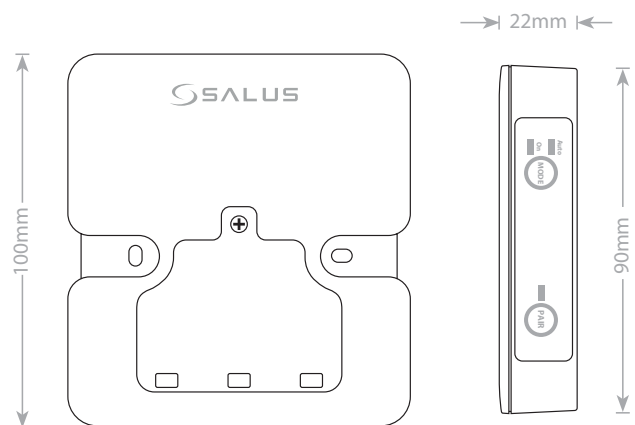
## Features

- Heating & Cooling control
- Slim design 22mm
- Perfect for IR heating panels
- IP54 Waterproof
- Compatible with SALUS 868 MHz range of thermostats
- 3m power cable included
- 5 Year Warranty

## Specification

<b>Connectivity</b>	868MHz
<b>Power Supply</b>	230V AC 50Hz
<b>Rating max</b>	10 (5) A
<b>Operating Temperature</b>	0°C to +50°C
<b>Storage Temperature</b>	-25°C to +60°C
<b>Outputs</b>	230V SL
<b>Ingress protection rating</b>	IP54
<b>Material (Housing)</b>	White, Gloss Plastic
<b>Safety Approval</b>	Class I
<b>Dimensions WxHxD</b>	110mm x 100mm x 22mm
<b>Guarantee (Receiver)</b>	5 Years

## Dimensions



## SSR868 RF Receiver - Technical Data

### Electrical and Mechanical Specifications

LED Operation	Auto LED	ON LED	Pair LED
Out of Factory	OFF	OFF	Solid RED
Pairing mode	OFF	OFF	Flashing GREEN
Lost Pairing / Auto mode / Relay Off (55 minutes each hour)	OFF	OFF	Flashing RED
Lost Pairing / Auto mode / Relay On (5 minutes each hour)	ON	OFF	Flashing RED
Lost Pairing Manual mode Relay always On	OFF	ON	OFF
Receiver paired Auto mode	ON	OFF	Solid GREEN
Receiver paired Manual mode	OFF	ON	Solid GREEN
Unpaired in auto mode	OFF	OFF	Alternating Green and Red
Firmware	OFF	OFF	Red and Green flashing according to version

### 3 modes supported: AUTO, MANUAL and OFF

Switch between them by short press of MODE button.

MODE	LED Status	FUNCTION
<b>AUTO</b>	GREEN Auto LED	Thermostat controls the relay of the receiver
<b>MANUAL</b>	GREEN ON LED	The relay is always activated
<b>OFF</b>	No LED on AUTO or ON	The relay is OFF

### Waterproof Protection

A common place for the receiver is to be installed in the bathroom, where high humidity can damage the receiver. The SSR868 has IP54 protection for this reason.



## Control upto 5 infra red heating devices...

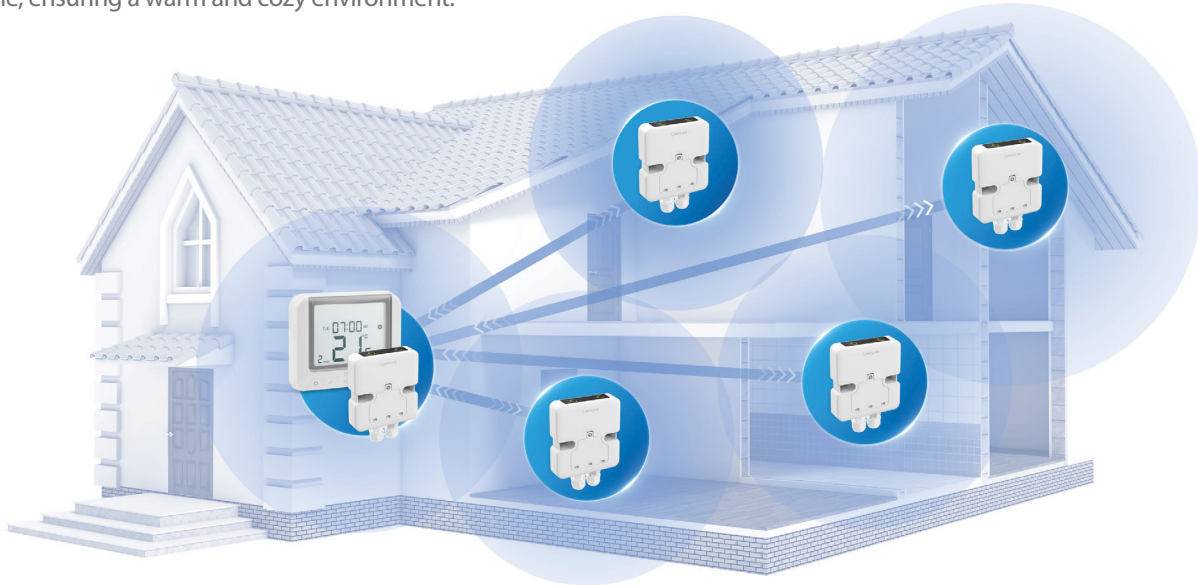
The SALUS SSR868 RF Receiver is ideal for controlling Infra Red Heating Panels. One thermostat can be linked with multiple receivers connected to infra red heating panels, giving you full control of your heating system.



The RT520TX thermostat sends a call for heat to the SSR868 RF receiver connected to an infra red heating panel.

## Control your whole home ...

The SSR868 is compatible with Salus 868 MHz range of thermostats (RT310TX, RT510TX, RT520TX, ERT20TX, 091FLRF(TX)), and by connecting to additional SSR868 RF receivers that are controlling infrared heating panels, you can manage the heating in your home, ensuring a warm and cozy environment.



Scan QR Code to View Product on Website

Tel: 01226 323961

email: [sales@saluscontrols.com/gb](mailto:sales@saluscontrols.com/gb)

[saluscontrols.com/gb](https://saluscontrols.com/gb)